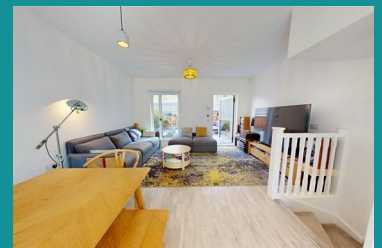




43 North Star Drive, Salford, M3 5LJ
Offers Over £425,000



**** IMPECCABLE THREE BED TOWNHOUSE WITH PRIVATE TERRACE & SECURE PARKING SPACE **** Forming part of the highly regarded Atelier development in a convenient location parallel to Chapel Street on the outskirts of Manchester city centre is this beautifully presented mid terrace residence. Spread over three floors, the well proportioned family home offers over 1100 square foot of stylish accommodation which has been tastefully decorated by the current owner. It boasts a sizeable terrace, high quality fixtures and fittings and generous storage space. Atelier is a fabulous addition to Chapel Street and stands within an exciting part of the city which is home to a selections of restaurants, coffee shops and retailers. Internally, the property offers an inviting entrance hallway with under stairs storage, a bright double bedroom, fully tiled shower suite with thermostatic shower and access to the communal car park. To the first floor there is an expansive open plan living space with Amtico flooring, access to the terrace and a stylish kitchen diner with Zanussi appliances including oven, ceramic hob and integrated fridge freezer. On the second floor is the master bedroom with fitted wardrobes, a luxury bathroom suite with ceramic tiling, third double bedroom and large utility cupboard. The house



- High Quality Fixtures & Fittings Including Zanussi Appliances & Amtico Flooring
- Short Walk from Spinningfields & Deansgate
- Close to St Philips School, Salford Cathedral & Salford University
- Impressive First Floor Terrace
- Three Double Bedrooms (Master with Fitted Wardrobes)
- Secure Allocated Under Croft Parking Space with EV Charging Point
- Bright & Spacious Three Bedroom Townhouse
- Downstairs Shower Suite & Under Stairs Storage
- Three Floors of Luxury Accommodation
- Stunning Open Plan Living Space with Dual Aspect